

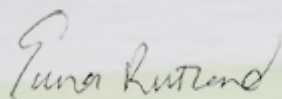
# FOREWORD

The East Midlands is at the heart of the country and a perfect location for businesses to invest and to locate themselves. It is also a beating heartland of innovation, enterprise and achievement with thousands of businesses creating jobs, apprenticeships and a thriving local economy.

Belvoir Castle plays its part too and my team and I are busy ensuring the castle and estate are here for businesses and local people to enjoy whether through a corporate event, country pursuits, weddings, charity events or team building away days and retreats.

I was so proud to launch the new Engine Yard in September with Elizabeth Hurley and it was wonderful to have KuKu there supporting us. The Engine Yard is a shopping village, with café, meeting and event space which offers people the space to come out of the office and into the fresh air and countryside; more than a collection of shops, it is our aim to create a community hub for all to enjoy with a calendar of events so we have a busy year ahead!

KuKu Connect is celebrating business and enterprise and it is my pleasure to write this foreword. KuKu are an inspiration to many business people, they truly support businesses and offer something fresh and different and it is with great pride that here at Belvoir we are a part of their membership community which this year has expanded to cover much of the region. So congratulations to KuKu Connect and to all the marvellous business people who are a part of this Almanac.



Emma Rutland

Her Grace the Duchess of Rutland



## KUKU CONNECT: *Out and about in the community*



*"I know KuKu Connect will do all they can in support of you, the business community to succeed"*

William Tucker,  
H.M. Lord-Lieutenant of Derbyshire

*"I congratulate & commend KuKu Connect on their positive impact in supporting local businesses and the wider community."*

Jennifer, Lady Gretton, DCVO, JP



*Social entrepreneurship is vital for good business*

LEICESTERSHIRE | DERBYSHIRE | MELTON & RUTLAND

## *A fresh approach to business networking*

KuKu Connect is a vibrant membership service connecting businesses and entrepreneurs at hand-picked luxurious locations across the East Midlands. Showcase your business services and indulge your senses by mixing business with luxury at our exciting and effective Connect Receptions.

KuKu Connect invites you to create vital relationships with key decision makers and leaders of businesses, so you can secure superior business connections at whatever stage of business you've reached.

[www.kukuconnect.co.uk](http://www.kukuconnect.co.uk)

CONNECT | INDULGE | ENGAGE | DEVELOP | SECURE

## Welcome to the KuKu Connect Almanac

We are thrilled to present this, our second KuKu Connect Almanac, which marks our second birthday.

The Almanac celebrates business and luxury across the region, showcasing all those businesses and entrepreneurs who have been part of KuKu Connect over the last year.

The East Midlands is a hotbed of enterprise and success and our members and partners play a vital role in contributing to the economy but also in their own communities and with our reputation as a region retaining international recognition for innovation from the large and established brands to new and emerging businesses, all playing an important role.

Luxury is a term, which individually can mean something different to each of us, but in business excellent customer service matched with excellent products is imperative to providing luxury. The Almanac reviews our past year particularly highlighting our Connect Receptions, which aptly take place at some of the best locations in the East Midlands, importantly marking our region out in the world as a place for business, investment, culture and tourism.

We would like to thank all of our contributors and Her Grace the Duchess of Rutland for giving this year's Foreword both as an entrepreneur and as one of our Members. We would also like to acknowledge the skill and talent

of Suzanne Fells, a KuKu Member from Suzanne Fells Photography who has taken what seems to have become our annual portrait, this year taken at Belvoir Castle in the private apartments, by kind invitation of the Duke and Duchess, a perfect setting and the venue for our Annual Birthday Reception which celebrates our Membership and the wider successes of the regional business community.

We would also like to thank Saul Morgan from Trent House Studios in Nottingham who has provided much of our coverage of the monthly Connect Receptions which feature throughout

this Almanac and finally to KuKu Member Print Print of Leicester who have printed the Almanacs to an exceptionally high standard who without their skill and support this Almanac would not be possible.

At KuKu Connect it is our passion to connect businesses and entrepreneurs together and to promote those businesses that make up our KuKu community, which we thank each of those businesses for being part of KuKu Connect and who we proudly present to you in this 'Business & Luxury' Almanac.

Our very best wishes,  
*Stephen, Philip and  
the KuKu Team*

*"Luxury is a term, which individually can mean something different to each of us, but in business excellent customer service matched with excellent products is imperative to providing luxury"*



Belvoir Castle in the Regent's Gallery

© Suzanne Fells Photography

# BELVOIR CASTLE

## BELVOIR - *'beautiful view'*

When the Normans arrived, they named the estate beautiful view "belle vue" in French which being rather a language tongue twister at the time the locals settled on Belvoir and yes, it's pronounced like the

animal, but far more inspiring is the view of the castle perched on a green hill top which commands views out into the vale of Belvoir.

One might think that living in a castle is a dream life, but it is a daunting task and huge responsibility in terms of preserving its heritage and treasures, as well as keeping up the vast costs of running a castle which is an architectural gem in its own right.

Home to the Manners family and the seat of the Dukes of Rutland, it is the Duchess who heads up this vast enterprise and who has opened up

the castle and estate to local people, international visitors and businesses. Belvoir Castle and its estate grounds have so much to offer, so running this programme is very much a hands on, full time occupation.

Corporate events and launches in the castle, away days, board retreats and team building activities, country pursuits, gardens, castle tours, overnight stays in lodges, weddings, parties and celebrations are all part of Belvoir's offer and now with the introduction of the new Engine Yard, a retail village, we simply say, go and visit and enjoy the 'belvoir'.

[www.belvoircastle.com](http://www.belvoircastle.com)



## IT'S ALL IN THE LOOK... AND THE TOUCH AT PRINTPRINT

The world has gone digital, the fountain pen is out (sadly we think), the iPhone is in, but in business looks matter.

Emails take over from good old conversations, yet a huge percentage of emails are left unopened. Many businesses want to stand out, make an impact, showcase their services, promote their skills and strengths, yet if your email goes unopened how do you make the impact that could snag you that meeting, or cultivate someone into your next client?

Video and social media has its place, but print is back and we think it's here to stay! After all, as humans we respond to look and touch; they are two of our five basic senses so there is hard science in our reason.

PrintPrint is one of many East Midlands based printers, but quality is truly in the eye of the beholder, so quality and skill counts. Printed materials, invitations, brochures, business cards, leaflets through to large scale window vinyls, exhibition stand, banners and shop front signage can either look fab, or somewhat under-par, so having the right printer is make or break for your business.

PrintPrint is a family run specialist for quality, with their printworks based in Leicester they have been serving businesses and private clients for over 24 years. Beginning in film processing and colour correction has given PrintPrint a legacy of skill and an eye for detail and we're not talking your average colour photocopier.



A range of finishes and touches, digital foil printing, colours, cards, papers, even awesome colour printed coffee tables, banners through to huge window displays for retail outlets and showrooms gives you a full and reliable service in the print expert PrintPrint. Now in the hands of the next generation, Hanif and Rubina Lokat and their team are renowned for providing quality and their vital 'checking process', which is where the team will meticulously check your artwork for any errors, colours or fonts that won't work - we've all been there, the excitement of when your final printing arrives and you get that sinking feeling as there is a mistake, or something just doesn't look right, that's why PrintPrint receive so many recommendations from happy clients.

Ok, so cost, well we are pleased to say that, by being an independent business themselves (we love the independents) gives PrintPrint a competitive edge and a high level of personal service, something the multi-nationals could learn a thing or two from, we Brits just love a personal service and with Hanif and Rubina at the helm you receive both service with a smile and exceptional quality.

PrintPrint work with you to meet your vision, which ultimately delivers a return to your bottom line, which is imperative to businesses large and small alike. Who doesn't like a proper invitation through the post or a business card that causes a stir - you need your print to make your business look as good as you are.

PrintPrint make it great, they make it better and they make it count, it's their motto and it certainly was the case for us here at KuKu Connect.

[www.printprint.co.uk](http://www.printprint.co.uk)  
[hello@printprint.co.uk](mailto:hello@printprint.co.uk)  
0116 255 6916  
247 Hinckley Road, Leicester, LE3 0TG



**MAKE IT GREAT.** MAKE IT SIMPLE.  
MAKE IT WORK. **MAKE IT BIG.**  
**MAKE IT POWERFUL.** MAKE IT IMPORTANT.  
MAKE IT HAPPEN. **MAKE IT CREATIVE.**  
**MAKE IT BETTER.** MAKE IT UNFORGETTABLE.  
MAKE IT INSPIRING. **MAKE IT COUNT.**  
**MAKE IT YOURS.** MAKE IT LAST.

MAKE IT **printprint**



## CHARITY: *At the heart of KuKu*

At the original launch of KuKu Connect in 2016 we made a commitment to support not only local businesses but also the wider communities we were a part of.

We have continued to support Her Majesty's High Sheriffs whose role is voluntary but one that supports a vast range of community organisations

and charities many of which we have been able to support through KuKu Connect. This year we are delighted to particularly support ABF the Soldiers' Charity, Me and Dee, the NSPCC, Twenty Twenty and Warning Zone – these organisations broadly support children, young people and families and heroic Services personnel and Veterans.

Without charities such as these and the many dedicated volunteers that support them the UK would simply come to a standstill.

Being truly entrepreneurial is not just about your own personal success, but also the success of your local economy and community and is at the heart of KuKu Connect and our community of businesses.

The NSPCC logo consists of the letters "NSPCC" in a bold, green, sans-serif font, centered on a white background.

### *NSPCC*

Abuse robs children of their childhood. Without help, the scars of abuse can last a lifetime. And as devastating as it can be for the child, society pays a heavy price too. Abuse changes childhood, but so can we.

Child abuse is preventable - not inevitable. And it's up to each of us to do everything possible to keep childhood safe from abuse, so children can grow up healthy and thrive. That's why we're here and drives what we do. So as long as there's abuse – we will fight for every childhood. [www.nspcc.org.uk](http://www.nspcc.org.uk)



### *ABF The Soldiers' Charity*

We give a lifetime of support to soldiers and veterans from the British Army, and their immediate families, when they are in need. We make grants to individuals through their Regiments and Corps and support a wide range of specialist charities that sustain the British Army 'family', both at home and around the world.

We take pride in being responsive, making a difference at a critical point in people's lives. We have been doing this since 1944, working with veterans of every conflict, and we envisage continuing doing so for the 'long haul' – supporting all future generations of our soldiers and their dependants. <https://soldierscharity.org>



### *Twenty Twenty*

We're called TwentyTwenty for a reason. Our aim is to help young people see beyond their disadvantage and disengagement, recognise their worth and potential, focus on building the skills for success, and develop a clear vision and plan to achieve sustained employment and a bright future.

And our vision for ourselves as an organisation is to have an ever larger and more effective impact across the UK in empowering these young people for success, and achieving greater youth employment rates year on year. [www.twentytwenty.org.uk](http://www.twentytwenty.org.uk)



### *Me & Dee Charity*

Based in Derby, we provide holidays for adults and children facing life threatening and life shortening conditions and military members with serious psychological and physical injuries in our two holiday homes which are based in Mablethorpe on the beautiful Lincolnshire coast.

This is Dee's Den. It is a large luxury caravan, with central heating, large decking and beautiful views across lake s and woods, in a very quiet area. [www.meanddee.co.uk](http://www.meanddee.co.uk)



### *Warning Zone*

Warning Zone is a Life-Skills Centre and children safeguarding charity. We deliver life-saving messages to children and young people across Leicester, Leicestershire and Rutland. Historically, we have worked with Year 6 children (aged 10/11), catching them at a key transition in their life as they venture in to secondary school.

At this point they will make new friendship groups and have new experiences. They will also have more independence and will be responsible for their actions, behaviour and the decisions they make – both offline and online. We aim to reduce the risk of accidental injury and death and also the strain on our emergency services. [www.warningzone.org.uk](http://www.warningzone.org.uk)

## LUXURY DESIGN & BUILD

## THE FOREFRONT OF LUXURY HOMES

GEC Luxury Design & Build are Midlands based with an impressive portfolio of bespoke designed and built homes from the simple with luxury touches and dream kitchens to extravagant extensions and skilled restoration projects.

Home Automation, top level security, tranquil swimming pools and leisure complexes, Moorish handmade artisan tiling, sleek Aritco home lifts, locally

sourced and environmentally friendly materials, cinemas, home salons and luxurious interior and garden designs are all part of the multi-award winning service.

Headed up by Master Builder, Gary Earp, Managing Director is a leading light in the luxury home build sector, where service is paramount to providing a high level of communication with client.

Gary and his team are one of the first in their field in Europe to embrace 3D virtual reality technology, so through the Oculus Rift VR Headset you can walk through your new virtual home before it is even built which can even detail interior design and landscaping and is a revolutionary advancement in the planning of your new dream home or extension.

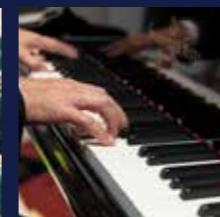
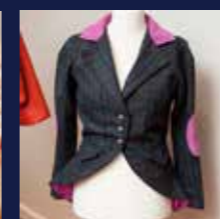
At GEC Luxury Design & Build they create beautiful spaces for fine living, with a turnkey service and you can rest assured you have the design and build of choice. So, what are you waiting for?

[www.luxurydesignandbuild.co.uk](http://www.luxurydesignandbuild.co.uk)



## OCTOBER: First Birthday at Lumbers Jewellers & Bruxelles

Lumbers glittered for October to celebrate the official first birthday of KuKu Connect with a dazzling display of jewels, fine Swiss watches and diamonds where guests and dignitaries were serenaded to the rhythmic throng of Indian dhol drummers from the Dhol Enforcement Agency. With an evening of fine food from Manish Sharma and Cocoa-Amore followed by fine Belgian Beer, cheese and biscuits in Leicester's most beautiful domed bar, Bruxelles. The evening celebrated business in Leicestershire, raising over £1500 for charity, with Her Majesty's Lord-Lieutenant of Leicestershire, Jennifer, Lady Gretton commending KuKu Connect for their positive impact and support for local businesses and the wider community. [www.lumbers.co.uk](http://www.lumbers.co.uk) / [www.facebook.com/bruxellesleic](http://www.facebook.com/bruxellesleic)



Royal commendation, diamonds & jewels, under a beautiful dome...



The Butler's Pantry are a leading catering & event company based in the Midlands and are recognised as nominated caterers for many prestigious venues.

They provide catering for both private & corporate clients, from intimate dinner parties to lavish weddings & fundraising charity balls. Based in Derby, they also run a cookery demonstration & tuition school and host private dining events throughout the year. Ralph (Director/Chef) is a keen game shot and fisherman and demonstrates and promotes game and fish cooking at county and food fairs throughout the UK.

[www.butlerspantryderby.co.uk](http://www.butlerspantryderby.co.uk)

Twitter: @butlersderby

Facebook: thebutlerspantryderbyltd



## NOVEMBER: *Lexus Showroom*

Lexus Hybrid, amazing for business; sleek and stylish craftsmanship and award winning technology for November with Lexus at their Leicester showroom joined by the Deputy Lord Mayor of Leicester. With a full hybrid range of Lexus models, the Lexus Business Plus and brand new LC cars, guests connected amidst an impressive fleet of car models, with international cuisine from A Bite Different, connoisseur tipples from 23 Wine & Whiskey and the best coffee around from 200 Degrees. [www.lexus.co.uk/Leicester](http://www.lexus.co.uk/Leicester)



*Lexus drives to impress for business...*



**Jude Read HR Consultancy provides strategic outsourced HR solutions and HR case management to small and medium businesses within a 50-mile radius of Leicestershire.**

Those businesses without a HR department often struggle to find the time to manage HR issues and further find it a challenge to keep up with employment law changes. The services offered are ideal for Finance Managers who often have HR responsibilities in addition to their own.

Jude Read HR Consultancy offers commercially focused HR advice that is delivered in a proactive manner, the result being that companies benefit from timely and efficient management of employee issues.

By outsourcing their HR, companies reduce the risk of employment tribunal claims which have increased following the removal of the fees.

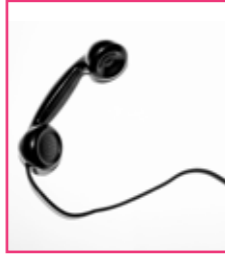
Often sitting at board level, the team at Jude Read HR Consultancy realise that strong working relationships are the key to success, they get to know your business, your culture and your key stakeholders.

With Jude Read HR Consultancy there is no unnecessary jumping through hoops, the experts have a common-sense approach that's strikes the balance between identifying any risks and allowing managers to make sound commercial decisions based upon the business objectives.



#### Retained HR

It's like having your own HR Manager. Great for managers that have HR responsibility in addition to their own.



#### HR Advice

Tap into the specialised knowledge base of Jude Read HR Consultancy to reduce legal risks.



#### HR Consultancy

Hands on HR management of complex and time consuming HR matters.

[www.juderead-hrconsultancy.co.uk](http://www.juderead-hrconsultancy.co.uk) | [jude@jrhr.ltd](mailto:jude@jrhr.ltd) | 01455 231982  
Jude Read-HR Consultancy Ltd, 46a Windsor Street, Burbage, Leicestershire, LE10 2EF

## DECEMBER: 45 St. Martins

Sister to the gin bar 45 West, December bubbled with prestige champagne with 45 St. Martins. Part of the 45 Bar Group and Burleigh's Gin, fine wine bar 45 St. Martins treated guests to vintage champagne tasting with a suite of Billecart-Salmon champagnes, cheeses and a specially created French 45 cocktail which ended 2017 in chic surrounds for business connecting at Christmas. [www.45west.co.uk](http://www.45west.co.uk)



*A fine toast to business at Christmas...*



## CORPORATE CHOCOLATES

Our team is on hand to help you create beautiful, bespoke gifts for your clients. Whatever the occasion or audience, Cocoa Amore is dedicated to providing you with handcrafted, tailor-made packages to make the perfect impression with maximum impact.

Please get in touch to find out more about product ranges and services:

info@cocoa-amore.co.uk  
www.cocoa-amore.co.uk  
0116 262 3278  
34 Silver Street, Leicester, LE1 5ET

## OUR CLIENTS

**GOLDSMITHS**  
SINCE 1778

**IMAGO**  
VENUES

**Mappin & Webb**  
LONDON



**WATCHES & SWITZERLAND**  
SINCE 1974

## STORE CONTACT DETAILS

### LEICESTER

info@cocoa-amore.co.uk  
34 Silver Street, Leicester, LE1 5ET

### BELVOIR CASTLE, ENGINE YARD

engineyard@cocoa-amore.co.uk  
Engine Yard at Belvoir Castle, Grantham, Leicestershire, NG32 1PA

### MARKET HARBOROUGH

sales@cocoa-amore.co.uk  
14 The Square, Market Harborough, LE16 7PA



## JANUARY: *Knight + Garter*

Unique and carefully restored, the Knight + Garter pub hailed in the New Year with pub classics in canapé form, served in the art gallery space. The pub is truly unique with a top range kitchen, a secret library dining room, its own premium lager beer and the only pub to have an art gallery. Pub-grub at its finest and a warm and friendly welcome. Our pub of choice. [www.knightandgarter.co.uk](http://www.knightandgarter.co.uk)



*Leicester's most carefully considered pub...*



*"Thank you for the excellent job you have done in supporting Ivanhoe Financial Planning Ltd with our printing. When we first spoke about what I wanted you could have just easily order taken, but I really felt you took the time to understand the personality of our business. Your attention to detail and creative approach has really helped us get our message across in our 'own voice', anytime I need anything printing, I will be using you. So thanks guys, and keep up the great work."*

**Nick Teige - Director & Financial Planner, Partner Practice of St.James's Place**

*"What a great team, skilled, helpful and experts in their field. Quality every time which stands out a mile for businesses. Our clients are always kept smiling with the print production and results from PrintPrint which is why they are highly recommended in their own right and our printers of choice day in, day out for both of our businesses. Family run, independent and able to deal with high end bespoke projects from national brands through to SMEs and local business, elegant invitations, stationery, the lot. My team and I cannot praise Hanif, Rubina and their team enough!"*

**Stephen Goddard, Founder & Managing Director, The KuKu Group**

## #YourPrintOurPassion

For more info or any printing enquiries, contact us on:  
0116 255 6916 or [hello@printprint.co.uk](mailto:hello@printprint.co.uk) or visit [www.printprint.co.uk](http://www.printprint.co.uk)



## FEBRUARY: 200 Degrees Coffee

Warming aromas for February at 200 Degrees' Leicester coffee shop. 200 Degrees know good coffee, but they want to give you more; superb coffee, freshly made savouries, fresh green and exotic salads, cakes, pastries and even nitro coffee, you can even buy it for home, or your office. Business was done over coffee, with expert baristas showing how to make coffee at its best at home. Connecting which warmed up our winter. [www.200degs.com](http://www.200degs.com)



*The best coffee around..!*

#LoveBusinessBUZ

Great Speakers

Exhibitors Across Three Halls

# Holywell Park Conference Centre

## Wednesday 27th February 2019 9.30am – 3pm

FREE Parking

FREE Delegate Entry

FREE Wi-Fi

Café Networking Hub



Whatever business you are in, there is something for you here. In excess of 3,000 business owners and senior managers are expected to attend Love Business 2019.

- > Wide Range of Businesses from across the East Midlands
- > Venue – Holywell Park Conference Centre, Loughborough
- > Presentation Theatre with Inspirational Business Speakers
- > FREE Delegate Entry
- > Café Networking Hub
- > FREE Parking and Wi-Fi

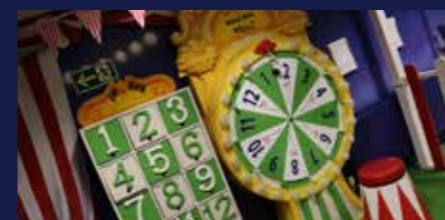
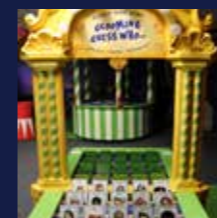
FREE Entry if you pre-book your Delegate Ticket today at [www.lovebusinessexpo.co.uk](http://www.lovebusinessexpo.co.uk)

If you want to get in front of potential new suppliers, partners and suppliers, then having a stand at Love Business EXPO 2019 will 'kick-start' your year! Stand prices start from £295+vat

Want to Exhibit? Book your exhibition stand today at [www.lovebusinessexpo.co.uk](http://www.lovebusinessexpo.co.uk)

## MARCH: Warning Zone

We entered the 'Warning Zone' for March with charity Warning Zone whose unique interactive and lifelike safety scenarios educate and empower children and young people to look after themselves on-line and out in the real world. Businesses toured the centre's interactive fairground and encountered the everyday dangers of life at this fantastic centre, which provides thousands of school children with essential life-skills, but as adults we were treated to proper Everards Beer and a welcome from charity President Richard Everard. [www.warningzone.org.uk](http://www.warningzone.org.uk)



Life Skills for every child...

# OH, FOR THE LOVE OF WINE!

Another? Wine Bar is Nottingham's first ever self-serve wine bar, located in Trinity Square. You really are spoilt for choice with over 30 different wines, champagne and sparkling wines all available by the glass and in a range of tastes, styles through to the weird, wonderful, sexy and exotic; you can even sample the wines as you go. Available for private hire and tasting events, you could host your own unique wine event for friends or with clients.

Upon arrival in the relaxed but chic surrounds you will be greeted and taken to your table where the Another? Wine

Bar team assign you a personalised tab card and simply serve yourself from there. Nominated for the Best New Bar and Best Outdoor Space with the Nottingham Restaurant & Bar Awards, we can't wait to start tasting. With a secret view courtyard and tasty charcuterie,

Another? Wine Bar is all about the wine, with flavoured and bottled water and no other fuss, and in their own words, "if water and wine was good enough for Jesus, its good enough for you". [www.anotherwinebar.co.uk](http://www.anotherwinebar.co.uk)



## APRIL: *Hotel Maiyango*

An exclusive preview for April as the new Hotel Maiyango is revealed to our members. Under new ownership and a brand new team Hotel Maiyango once again opened its doors to businesses and entrepreneurs. With signature canapés and fizz to toast on the roof top bar Maiyango celebrated with all new Member's cards, a perfect incentive for a boutique stay, or a reserved quiet spot in the clouds with a rooftop view and cocktail. [www.maiyango.com](http://www.maiyango.com)



*Boutique back for business...*

## Suzanne Fells PHOTOGRAPHY



**Suzanne Fells is a visual branding specialist and photographer.**

Suzanne has spent 17 years travelling globally within the fashion industry, sourcing, developing and designing products for large retail companies, within brand values and careful of client demographics mainly within the

'clothing' sector. A full time freelance photographer and business owner, she now brings branding experience to every shoot consideration and client conversation. Images are not simply taken they are carefully judged and then made.

Her portfolio specialises in 'people, faces and documentary' and the capture of that decisive moment. Her commissions also include the creative capture of documentary lifestyle weddings; destination shoots include snow and The Arctic Circle.

Over 11 years in business she has shot for supermarket chains such as ASDA and Budgens (food), Ben Bailey Homes and Synseal conservatories (Architecture) and Boots (lifestyle products).

She wants her clients to have the best of truthful, natural and powerful portraits and photographs. She understands that in the current commercial climate, clients search for 'brands with personalities'. Her mission is to instil in clients how

important and impactful a well judged and carefully made image can be and the effect it can make on their business. How a stunning image can elevate brands above the competition and massively increase business potential and ROI. And that there could be a fundamental reason that your business is not moving forward as it should be. That reason could be that your photographs are not 'saying the right things'.

So many judgments, opinions and decisions are made about businesses in split seconds just by looking at a photograph. Clients are visually driven and respond instantly to photos before they often consider reading text. This is her ethos; to elevate and carefully position your business branding by beautiful and commercially messaging photographs. Great photography makes your brand and business come alive!

**Suzanne Fells - 07825 157274**  
**[www.suzannefellsphotography.com](http://www.suzannefellsphotography.com)**



## APRIL: Belvoir Castle

Elevenes at a castle; Belvoir Castle invited our Members to a special Connect Reception for morning coffee and cake set in the castle's inspiring Guard's Hall and splendid State rooms. Her Grace the Duchess of Rutland, a member of KuKu Connect spoke with our guests about the importance of welcoming businesses and local people into the castle, the estate grounds and the exciting plans for Belvoir's new Engine Yard, a boutique shopping outlet with café, shops and community events. [www.belvoircastle.com](http://www.belvoircastle.com)



*Connecting in a castle...*



Cheese has always been a food that both the sophisticated and simple, love. Bread they say is the stuff of life. At BIGMelt we take this humble pairing and 'pop up' at selected special events, whereby we create mouth watering grilled cheese sandwiches. Tastefully twisting a classic dish, we begin with two slices of artisan Sourdough bread and fill deep with our unique blend of authentic Raclette, Red Leicester & Vintage Cheddar cheeses'. Sizzling grills then muster the tantalising magic of bubbling cheese, along with

# Gourmet CHEESE TOASTIES

the unmistakable aroma of fresh toasting bread. Then once the cheese melts to perfection, our gourmet toasties are ready to savour and enjoy.

Delicious as BigMelt toasties are, we also offer a fine selection of inspiring ingredients for those wishing to dress them up a little further. Including A must try, award winning caramelised red onion chutney & a daring red chilli jam. The list is not quite endless but does change depending on seasonality and of course by request.

For special diets and lifestyles we offer gluten free bread and vegan cheese alternatives; no one need ever miss out on a BigMelt treat! Whilst you are most likely to find us at foodie markets, festivals, often alongside other fantastic

gourmet produce.

The new trend for casual dining and social mingles is establishing BigMelt as an exciting menu alternative for other events such as wedding buffets ,special celebrations & corporate business functions alike - we even pop up at some sporting events.

Such events & invitations spread our toastie love far and wide, but our hearts melt most here at home in the East Midlands. So should you find yourself in need of toastie love, please do get in touch and we'll melt yours...

[www.Bigmelt.co.uk](http://www.Bigmelt.co.uk)  
**Instagram:** [bigmeltsaycheese](https://www.instagram.com/bigmeltsaycheese)  
**Twitter:** [@melt\\_big](https://twitter.com/melt_big)  
**Facebook:** [deliciousmeltedtoasties](https://www.facebook.com/deliciousmeltedtoasties)



## MAY: Derbyshire Launch at Cathedral Quarter Hotel

KuKu launches in Derbyshire. The Cathedral Quarter Hotel part of the Finesse Collection hosted the official launch greeting guests with mouth watering canapés including a specially created patisserie KuKu canapé chocolate surprise. Our friends from Lumbers jewellers showcased their fine collection and gave out goody bags to celebrate the launch. The hotel which has hosted royalty and Her Majesty The Queen welcomed dignitaries from around the county who came to support the launch reception including Her Majesty's Lord-Lieutenant of Derbyshire who welcomed KuKu Connect to Derbyshire and urged businesses to support entrepreneurship through connecting. [www.cathedralquarterhotel.com](http://www.cathedralquarterhotel.com)



*KuKu Connect launches with finesse in Derbyshire...*

## KUKU CONNECTS: *At Buckingham Palace*

We were honoured to be invited to a Royal Garden Party in May at Buckingham Palace which was hosted by Her Majesty The Queen and members of the Royal Family including His Royal Highness Prince William, The Duke of Cambridge. Along with the Queen were two Princesses, three Dukes and a Duchess, all from the Royal Family all playing a part in hosting the special afternoon. We were invited to acknowledge the success of Kuku Connect particularly for supporting local businesses and our wider work undertaken in the community and with a number of charities across the East Midlands.



## MAY: *Leicester Guildhall*

Medieval splendour for KuKu Connect. May took us to Leicester's Guildhall - one of the original medieval buildings in the region with one of the three oldest libraries in the country. Guests were entertained in the Lord Mayor's Parlour and the Great Hall - once the seat of great power in Leicester. Guests were joined by the modern day Lord Mayor of Leicester who connected with Members over medieval themed canapés from Manish Sharma and Everards beer. The Guildhall is ideal for weddings and events. [www.leicester.gov.uk](http://www.leicester.gov.uk)



*Medieval networking at Leicester's historic Guildhall...*

# IN MAGAZINE



Whether you're IN Nottingham or IN Derby, your brand deserves the best.

IN Magazine has the very best readership, coverage and style.

Targeting all social demographics and all age groups, our market-leading distribution incorporates pick up points in high foot-flow areas of both cities, coupled with an array of busy venues, bars, restaurants, retailers and commercial establishments. Strengthened with delegated home delivery, our fantastic door-to-door distribution provides an established approach to reading at home with a long shelf life expectancy.

As well as our client's advertising, here at IN Magazine we take pride in our content and give our readers exactly what they want; everything that is new and exciting within both Nottingham and Derby.

IN Magazine has features such as; What's New, Reviews, What's On Guide and Interviews with local influences, plus features on Health, Style, Travel, Beauty and much more.

**THISISIN.CO.UK**

**0115 981 9200**

**@THISISINMAG**



## JUNE: Four18 Wellbeing

Medicinal connecting for Derbyshire. The brand new FOUR18 Wellbeing clinic in Derby hosted our first Derbyshire Connect Reception with the new Mayor of Derby attending as one of his first official engagements. The new clinic which offers a whole range of health services from Harley Street trained GPs welcomed Members with specially created medical themed cocktails and chocolates from Taylor-Wilde Chocolatier. The clinic is also the new home for Cosmedocs, which offers clinical level aesthetics for both men and women. [www.cosmedocs.com](http://www.cosmedocs.com)



*The Dr's orders for medicinal networking in Derby...*

# The Farmhouse at Mackworth

## About Us

Our ethos here is simple. We're all about being excellent in everything we do; from the food and drinks we serve to the home-from-home space we've created. So whether you're joining us for a drink at the bar, an overnight stay or a special event we aim to go above and beyond every time you visit.

## Josper Steaks

We've handpicked the finest producers of beef across Britain and the US who provide us with the best quality cuts all matured for a minimum of 28 days. Our Josper charcoal oven cooks the meat quickly meaning you get a great smoky, juicy piece of steak every time.

## Wood fired Pizza

When it comes to pizzas we like to think that ours are pretty special. Using our very own dough recipe and the finest toppings they are cooked to perfection in our wood fired oven and you can even watch them being made while you wait. Plus, we also make our pizzas to take away.

## Boutique Rooms

With 10 beautifully designed bedrooms full of home comforts and charm, we're the perfect choice for that mid-week pit stop or a weekend getaway. A touch of luxury with great beds for the perfect nights sleep, cosy bathrobes, White Company products and Nespresso machines.

## Crafted Drinks

Our bar boasts an expertly crafted list of classic cocktails, alongside rows of boutique spirits as well as a range of world beers on tap and in the fridges. Guest ales make an appearance with some local additions and we haven't forgotten about a few non-alcoholic concoctions too.

[www.thefarmhouseatmackworth.com](http://www.thefarmhouseatmackworth.com)  
Tel: 01332 824324



## JUNE: 45 Distiller's Kitchen

Gin's the business; The Distiller's Kitchen was our May Connect Reception host where Leicester's Burleigh's Gin hosted a busy throng of businesses from all over the city. The Distiller's Kitchen run gin schools where you can distil your own special recipe of gin, but also offer a unique venue for corporate events and board meetings, even a party with a difference. Naturally Burleigh's signature gin & tonic was the order of the evening, its medicinal for KuKu style networking. [www.45ginschool.com](http://www.45ginschool.com)



We'll have a gin and tonic with our networking please...

At the same time as helping to run a medium sized legal practice I developed a passion for making celebration cakes of all types and sizes, all very different which I have done since 2006.

When I was finally able to remove myself from the legal industry I decided that my WHY was designing, making and decorating cakes of a lifetime for weddings, other events, special occasions and corporate cakes and biscuits. Hence my change in profile. My firm is registered with the local authority and HMRC. I also have insurance and a 5-star Hygiene Rating.

If you're looking for the ultimate wedding, anniversary, birthday, baby shower, christening or corporate cakes and any other event cakes, Tree House Cakes can create bespoke designs to match all themes and events.

No request is too big, small, or beyond our capability. Our delicious recipes are expertly baked and lovingly crafted creating a visual taste experience that is sure to be a conversation starter at your next event.

**Gluten free, dairy free, egg free, vegan, yeast free, wheat free catered for.**



Please call 07717767596 for a discussion and no obligation quote. (distance is no problem)



## JULY: The Farmhouse at Mackworth

Rolling green countryside at the Farmhouse at Mackworth. Our July Derbyshire Connect Reception took us into rural Derbyshire for a canapés barbecue hosted by the Farmhouse at Mackworth who toured guests around the farmhouse, which boasts delightful accommodation and The Folly which is used for weddings, events and meetings, with its own private outdoor garden area. We Aperol Spritz fizzed along with a buzz of connecting with many new businesses. [www.thefarmhouseatmackworth.com](http://www.thefarmhouseatmackworth.com)



Countryside connections at the Farmhouse and Folly...



**ESSENTIALLY FLORAL**  
LONDON • DERBY

### Simply Stunning, Stunningly Simple

For more than a decade, Jilly has provided clients of distinction with Christmas decorating services and floral-inspired décor through her company, Essentially Christmas Decorating. Drawing upon this extensive experience, and proud to have launched Essentially Floral, a sister company, extending the offering under a new brand name.

Essentially Floral provide luxurious blooms in stunning locations, delivering flowers for beautifully elegant weddings, events, anniversaries and birthday celebrations. Creating instant impact with captivating floral designs and custom-crafted home staging. Building upon an established network of local and international growers, Essentially Floral brings exclusivity and prestige to your occasion.

From Classic designs to the bespoke and breathtaking, Essentially Floral cater for the discerning and are obsessive when it comes to quality and attention to detail.

Based both in Derby and London, Essentially Floral are ideally located, delivering their exquisite services the length and breadth of the country. Unique and design led to follow your theming, framing your day with the of finest flowers.

**Our Services:**  
Weddings / Christmas Decorating Services / Private dining / Halloween or Luxurious Valentine Tablesapes / Baby Gender Reveal Parties / Making an Entrance and so much more.

Say Hello we would love to hear from you or visit us in our fabulous design studio in Appleby Magna.

Email [Jilly@essentiallyfloral.co.uk](mailto:Jilly@essentiallyfloral.co.uk)  
[www.essentiallyfloral.co.uk](http://www.essentiallyfloral.co.uk)  
[www.essentiallychristmasdecorating.co.uk](http://www.essentiallychristmasdecorating.co.uk)  
Tel 07973250982



## JULY: *Après Lounge and Bruxelles*

Business goes on in the garden; The Après Lounge, Leicester's alpine themed ski lodge welcomed Members with a signature cocktail, followed by charcuterie and cheeses in the Bruxelles Garden Bar, with yet more themed cocktails and the launch of the Nachural Entrepreneurship Awards which KuKu Connect is proud to be a sponsor. Guests enjoyed the garden vibe for alfresco connecting and more summer sunshine the one of the most peaceful city centre hideaways.  
[www.facebook.com/bruxellesleic](http://www.facebook.com/bruxellesleic)



*On the Piste with KuKu Connect...*

LEXUS HYBRID RANGE

# AMAZING FOR BUSINESS



For more information contact our Corporate Sales Manager, Steve Holler, on 0116 319 0975  
or email: [steve.holler@lexus-leicester.lexus.co.uk](mailto:steve.holler@lexus-leicester.lexus.co.uk)

## EXPERIENCE AMAZING AT LEXUS LEICESTER

Blackbird Mills, Abbey Lane, Leicester LE4 0DZ  
0116 319 0975

[leicester.lexus.co.uk](http://leicester.lexus.co.uk)

No need to charge. No need to plug in. Lexus Hybrid is always ready. Using smart 'regenerative braking' technology, the advanced, compact battery is efficiently charged as you drive, capturing energy when you brake and converting it back to electricity – so you have power whenever you need it.

Plus, with Electric Vehicle (EV) mode available in every hybrid model in the range, you can cruise on electric alone. Meaning lower fuel consumption, lower CO2 emissions and savings on company and BIK tax.

Official fuel consumption figures in mpg (l/100km) for Lexus Hybrid range: Urban 38.1 (7.3) – 78.5 (3.6), Extra Urban 47.1 (6) – 80.7 (3.5), Combined 43.5 (6.5) – 78.5 (3.6) CO2 137-81 g/km. BIK from 18 – 28%.



LEICESTER



BUSINESS PLUS

## AUGUST: *Leicestershire County Cricket Club*

Cricket anyone? In the perfect summer sunshine our August Leicestershire Connect Reception was hosted by Leicestershire County Cricket Club in the Trevor Bennett Suite. Joined by CEO Wasim Khan and members of the Leicestershire Foxes, guests connected amidst the excitement of a T20 match. With outdoor concerts and open-air theatre, meeting spaces and hospitality to suit all budgets the Club proudly values its heritage but it is welcoming and open to all. [www.leicestershireccc.co.uk](http://www.leicestershireccc.co.uk)



*Leicestershire Foxes on fire for KuKu Connect...*



Fraser Urquhart Media are masters in their own field, offering a commercially-led blend of PR, Luxury Lifestyle Publishing, Events and Reputation Management that builds brands and business.

They make companies more visible, more networked and more successful thanks to a depth of knowledge that affords an enormous advantage over all other PR agencies, locally and nationally.

With 19 years of experience in the Midlands, Fraser Urquhart Media are a team of experienced media professionals that are both Publisher and Publicist and are responsible for some of the midlands' biggest and best loved media titles. The brainchild of Jonathan Fraser and Kevin Urquhart, Fraser Urquhart Media is, quite simply, The Midlands' most connected publicity specialist with the hottest Black Book in the Midlands and beyond.

Co-founder, Jonathan Fraser is the creative powerhouse who directs the delivery and strategy. His background as a journalist and magazine editor makes sure he's first to find the angle on any story and sell it in effectively to his large contact base. Jonathan has a large and varied range of television and radio broadcast experience working on

documentaries, news reports, live televised events, drone filming and 360° film production streaming.

He's joined by Kevin Urquhart who has worked first-hand with some of the biggest and most influential brands and agencies in the world. An award-nominated networker, he is an experienced creator of exciting, visual and commercially successful events. It is down to Kevin's tireless networking (aka socialising) that has created an enormous goodwill and the best Black Book of Contacts in the industry, opening doors for your business.

**WE KNOW YOU:** We have worked alongside a wealth of food and beverage outlets and brands over the past two decades and we have both passion and experience. It's our job to understand you, so we can point the publicity spotlight in the right direction.

**WE ARE JUST LIKE YOU:** We work ethically and honestly, too. We have strong core values and moral compass. We don't hide behind smoke and mirrors and value truth and transparency. It



does mean, like you, we aren't always the cheapest, but quality in an investment

**WE'RE CONNECTED:** We're more than just a PR or Events company. Sure, we shine at those, but no other PR Agency has the B2B and influencer Black Book database that we have. Established in 1999, we are proud of our impeccable reputation and goodwill – we can make big, exciting things happen

**WE'RE SAFE:** Your business is safe with us and will always be directed by Jonathan Fraser or Kevin Urquhart, with support from experienced Senior Account Managers and Executives. It's our name on the company, so it's US that you'll get.

**WE'RE HUNGRY:** We talk the talk and walk the walk. As working journalists, we see the good, the bad and the ugly of other PR companies. We understand angles and stories – and, crucially, how to pitch them to fellow journalists to achieve maximum results. Our PR helps go beyond launches and 'honeymoon' periods: ours is grass-roots, business-developing PR and Publicity designed to make an impact on your business – and bottom line.

**WE'RE ON THE SCENE:** We not only have the hottest team of online specialists in the sector and the know-how to create reach, but sociable and on the scene.

**WE'RE UNIQUE:** You won't find another Publisher AND Publicist in this region. It's a winning combination as we can GUARANTEE coverage in our own luxury titles. No one else can offer this to you and elevates your ROI in ways no one else can.

Find out more about how they can help your business by calling 0116 2533445 or visiting [www.fu-media.co.uk](http://www.fu-media.co.uk)

## AUGUST: *Everyman Barbers*

An authentic cut above for businesses. Men's hair and grooming, Everyman Barbers hosted the August Derbyshire Connect Reception at their Derby barbers on Sadler Gate. Fresh pizza, drinks and complimentary facials provided Members with somewhere quite different for networking with each guest receiving an Everyman corporate card for their business, staff and family to use. Everyman know how to make the chaps look good and cater literally for every type of man, no matter what your hairstyle is, young and mature alike. [www.everymanbarbers.co.uk](http://www.everymanbarbers.co.uk)



*Dapper connections in Derby makes a cut...*

# CROW AND JESTER

Established 1997



*"The Crow is the introvert.  
For the fashion conscious man  
who knows he has the best suit  
on in the room but doesn't need  
anyone to know."*

*"The Jester is the extrovert.  
For the peacock in all of us.  
Who when on a great day wants  
to walk into any room wearing  
the best suit in the world and  
wants everyone to notice him."*

Simon Horsley  
the man behind the cloth

## SEPTEMBER: *Risley Hall*

Risley gets festive. Our September Derbyshire Connect Reception was hosted by the award winning Talash Hotel Group at their renowned Risley Hall in the Baronial Hall, where Members and guests were treated to a festive themed afternoon tea and a special KuKu cocktail. Set in picture perfect grounds, the hall has a historic past, but through careful refurbishment has retained many original features and the charm of a country house. It's ideally located minutes from the M1, so go festive with Risley or just treat yourself to an overnight stay in this place of beauty and calm. [www.risleyhall.co.uk](http://www.risleyhall.co.uk)



*Festive connections in Baronial splendour at Risley...*

## SEPTEMBER: *Everyman Barbers*

For the man in your life. Everyman Barbers at their Leicester barbers hosted August with another dapper evening more complimentary facials and a number of trims and beard shaves. Yes, Everyman are trained and talented pros' so making our chaps look good is their job. With a full house of businesses connecting, free Everyman corporate cards, Marco's pizza, drinks and new Members the evening was a cut above. [www.everymanbarbers.co.uk](http://www.everymanbarbers.co.uk)



*Dapper connections for Leicester businesses...*

## SEPTEMBER: *KuKu Connect Boutique Launch*

September saw the launch of the new KuKu Connect Boutique concept for Melton & Rutland which is hosted by Pera Business Park. Very much still focusing on effective connecting, the boutique addition welcomes different businesses to exhibit to our guests. We showcased the lusciously cheesy Big Melt, Melton based Brentingby Gin (as seen in Vogue magazine), the delicious Treehouse Cakes, the fab Rebecca Couture Millinery, the discerning Modern Gentleman and Midlands based Asian Plaza Business Directory with support coming from all over Melton and Rutland including Her Majesty's Lord-Lieutenant of Rutland and an array of new businesses. [www.perabusinesspark.co.uk](http://www.perabusinesspark.co.uk)



*Melton & Rutland connect with KuKu...*

## THE EAST MIDLANDS HAS GONE KUKU!

KuKu Connect is about one thing and that is connecting business people to engage and develop authentic relationships in order to secure new business, albeit with indulgent Connect Receptions with complimentary hospitality in Luxurious locations and businesses in the region.

KuKu Connect is proud to host monthly Connect Receptions in Leicestershire, Derbyshire and now with KuKu Connect Boutique in Melton & Rutland. Welcoming, relaxed, vibrant and filled with an array of friendly businesses our alternative networking receptions, have won praise from Ministers and Regional Leaders alike. 'No pitches, no presentation, no push' is our motto, as we want to offer something different for businesses.

A highlight of our past year was learning we had been nominated and made a finalist in the East Midlands Nachural Entrepreneurship Awards, being nominated from within our Membership, which was a wonderful gesture, in acknowledging our effectiveness for business networking. The Awards were supported by business giant, Sir John Peace who Chairs the Midlands Engine and is the personal representative of Her Majesty The Queen in Nottinghamshire, as Lord-Lieutenant.

KuKu Connect is delighted to now be a sponsor of the Nachural Entrepreneurship and Signature Awards, which were founded by Ninder Johal with his goal of connecting the East and West Midlands together to form a powerhouse for entrepreneurship in business and the community.

We have lent our support to the Love Business Expo, which is a showcase of businesses from all over the Midlands

in February, to thousands of delegates. KuKu is their Official Networking Sponsor and holds a special Connect Reception for exhibitors and delegates, which was attended by the now retired Lord-Lieutenant of Leicestershire, Jennifer, Lady Gretton.

We are also pleased to support the East Midlands Women's Award's, which was founded by KuKu Member, Sandra Pollock who champions women into enterprise, leadership and management roles.

Our support of a number of initiatives is aimed to ensure our Members benefit from a whole range of opportunities and events; our Members Privilege Card opens up range of first class members only offers, free consultations and invitations, as well as the opportunity of featuring their own business offer on the card; just some of the benefits, effectiveness and added value of Membership with KuKu Connect.

It has been a wonderful year of Connecting and we wish all our Members, Partners and friends a prosperous and successful year ahead, but if you've not connected with us yet, then . . . **It's time to go KuKu!**

# KUKU | CONNECT

Derbyshire | Leicestershire | Melton & Rutland  
[www.kukuconnect.co.uk](http://www.kukuconnect.co.uk)  
[hello@kukuconnect.co.uk](mailto:hello@kukuconnect.co.uk)

Opposite: KuKu Connect founders,  
Stephen Goddard & Philip Brooks-Stephenson





## BELVOIR MEANS BUSINESS

A castle with over 300 rooms and a beautiful rolling green estate means Belvoir has a lot of space to offer businesses of all sizes and budgets; whilst the castle and its historic and stunning interiors might make a grand occasion for your annual business event, a product launch, a dinner or charity event there is a lot more Belvoir can offer to smaller organisations.

Frog Hollow is a secluded lodge perfect for barbecues, with Croxton Lodge housing over 10 people, so perfect for a tranquil retreat, private party or shoot, in addition Moscar Lodge sits in the Derbyshire borders, perfect for family gatherings and parties.

The Engine Yard has event space and will be running its own community

events and pop-ups throughout the year and of course if you want to impress you have the State rooms and Lakeside marquee for larger gatherings and showcases, but essentially Belvoir is a family home that has its door wide open to a warm welcome.

For further information contact Stacey Furguson: [sfurguson@belvoircastle.com](mailto:sfurguson@belvoircastle.com)  
[www.belvoircastle.com](http://www.belvoircastle.com)



**Adrian Ganderton: Tree House Cakes**

Cake making and decorating extraordinaire  
[www.facebook.com/TreeHouseCakeCompany](https://www.facebook.com/TreeHouseCakeCompany)



**Dr. Agib Bhatti: FOUR18 Wellbeing**

FOUR18 Wellbeing offers private health appointments and aesthetics within a tranquil, safe and confidential setting. Your personal comfort and wellbeing is of the upmost importance to us. Led by Harley Street trained GPs, we have created a cutting-edge, stylish private health clinic to provide our clients with a first-class alternative to healthcare. [derby@cosmedocs.com](mailto:derby@cosmedocs.com) / 01332 404325



**Ali Fleming: Cariat Personal Ceremonies**

I help you to create the perfect and unforgettable ceremony. A wedding day, a vow renewal or a baby naming – no matter the special day, I can combine elements such as a sand or Unity in Glass ceremony, handfasting, ribbon ceremony, ring warming, your choices of music and carefully written words at your perfect location – designing a service that is uniquely yours. [www.cariat-personalceremonies.co.uk](http://www.cariat-personalceremonies.co.uk)



**Andrew Deighton: AWD Development Solutions**

We work with individuals, teams and organisations to create and deliver development and change management solutions that offer the best possible opportunities for personal and business success. We address your requirements with a creative and flexible approach and produce focused offerings to solve your specific problems. <https://awddevelopmentsolutions.com>



**Andrew French: Creed Design**

We at Creed are a motivated and passionate team of Interior Architects and Designers. We provide unique solutions to the retail and leisure industries, using our extensive experience to create environments that differentiate your brand and help realise the true potential of your business. [www.creeddesign.co.uk](http://www.creeddesign.co.uk)



**Anna Barker: Lush Garden Design**

Is your garden getting tired, scruffy and difficult to maintain? Or is it just bland and boring? Do you wish you could enjoy your outside space? Would you love to entertain friends and family without feeling you have to apologise for the state of your garden? Or do you dream of a garden where you can just sit out and relax? [www.lushgardendesign.co.uk](http://www.lushgardendesign.co.uk)



**Antony Bola: Antony Magic**

Award winning professional close-up magician and Leicestershire's Magician of the Year, voted one of top 3 best close up performers in the Midlands & East Midlands. I am a Member of world famous "The Magic Circle" and am one of the most sort after magicians in the UK. [www.antonymagic.co.uk](http://www.antonymagic.co.uk)

# 200° COFFEE

## DRINK BETTER COFFEE AT WORK



*We* are independent speciality coffee roasters and unashamed coffee geeks. Our shops serve over half a million cups of coffee every year but what you might not know is that our coffee is drunk in numerous offices, studios, call centres, conference halls, shops, and showrooms. Our business customers enjoy the benefits of our high standards, coffee expertise and unrivalled customer service:

### COFFEE

Hand-roasted beans delivered fresh to our customers from our roast house every week. There's always a constant supply of high quality coffee

### KNOWLEDGE

Free appraisal of your coffee provision and advice on how to provide better coffee for your team

### PEOPLE

Free training on site and customer support during office hours

### MACHINES

A huge range of equipment and maintenance with flexible contracts for any size of business

**Book a free appraisal  
with our coffee experts**

Contact: Bec,  
rebecca@200degs.com  
or 0115 837 4849



*Asma Karim:* **DWS Legal**

Our clients come to us because of our depth of experience and the personal service our solicitors provide to each and every one of their clients. Our team of solicitors are able to advise and act upon all areas of law providing one of the best legal services in Leicester and the UK. <http://d-w-s.co.uk>



*Barbara Elsey:* **NSPCC**

Child abuse is preventable – not inevitable. And it's up to each of us to do everything possible to keep childhood safe from abuse, so children can grow up healthy and thrive. That's why we're here and what drives what we do. So as long as there's abuse – we will fight for every childhood. [www.nspcc.org.uk](http://www.nspcc.org.uk)



*Bev Sankey:* **Arbonne International**

I was introduced to Arbonne in September 2011 and it has changed my life beyond recognition. I had a 25 year career as a Designer and Business Owner in the Accessories Industry working with Stores such as Boots, Harrods, Next and Monsoon. It was an amazing and exciting journey that took me to the USA Europe & the Far East. [www.arbonne.com](http://www.arbonne.com)



*Beverley Brooks MBE:* **Brooks Charity Solutions**

We are a family business comprising of Beverley and Philip who have 40+ years' experience leading, managing and working in not for profit organisations dedicated to meeting the needs of our diverse communities including 15+ years at Chief Executive level nationally and locally. [www.brookscharitysolutions.org.uk](http://www.brookscharitysolutions.org.uk)



*Buckso Dhillion-Woolley:* **BC Lifestyle Events**

We at BCLE HQ feel that collaborations create profit, together everyone achieves more so lets make it happen! [www.facebook.com/BCLifestyleEvents](http://www.facebook.com/BCLifestyleEvents)



*Chris Gneffier:* **NBV**

Looking for help to move your business forward? Then this is the programme for you! Business Assist from NBV gives you all the tools you need to sustain and grow your business. [www.nbv.co.uk](http://www.nbv.co.uk)



*Chrissie Gregory:* **Face by Chrissie**

Make a statement to the world, be bold and embrace life. You can make the world take notice of you with how you present yourself. Use colour to make that statement! FacebyChrissie can advise, consult and apply colour to your life with a flick of a brush. [www.facebychrissie.co.uk](http://www.facebychrissie.co.uk)



I had a 25 year career as a Designer and Business Owner in the Accessories Industry working with Stores such as Boots, Harrods, Next and Monsoon. It was an amazing and exciting journey that took me to the USA Europe & the Far East.

I was introduced to Arbonne in September 2011 and it has changed my life beyond recognition.

Arbonne transforms lives through pure, botanically based ingredients in scientifically tested products; a pure, healthy lifestyle; and the pure joy of helping others.

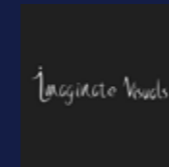
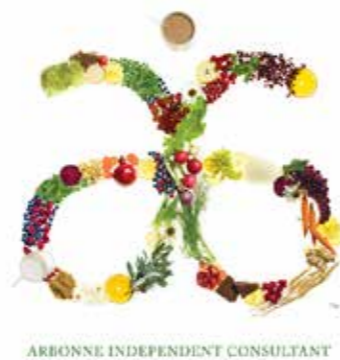
Business is ALL about change and growth, and where I am now is that I have time freedom and choices. I decide what and when and how.

My realization is that everything resides in the GUT - 70% of your immune system resides in the gut; it's our 1st brain.

Feed it and nourish it with nutrients and Love. My passion is now Nutrition and a Holistic Prevention approach rather than Cure. I'm passionate about educating people about toxins in and out the body, so care for yourself

emotionally and physically and trust your gut instinct . Follow with passion and purpose your dreams and ideals and they will manifest into reality.

[www.bevsankey.com](http://www.bevsankey.com)  
[Facebook.com/BevSankey](https://www.facebook.com/BevSankey)  
[www.beverleysankey.arbonne.com](http://www.beverleysankey.arbonne.com)



## Corben Savage: Imagine Visuals

Imagine Visuals grew from the dream to turn a concept into reality. Using state of the art technology to turn concept designs or plans into 3D digital models, which are then used to create a wide variety of digital imagery to allow a client to better visualise a design for themselves. [www.imaginevisuals.co.uk](http://www.imaginevisuals.co.uk)



## Craig Sparrow: S&L Personnel

S & L Personnel is your trusted recruitment agency supporting businesses throughout the Midlands area. We offer a competitively priced, high-quality, professional and dependable service to all of our clients and candidates, whether you're looking for temporary or permanent recruitment services. [www.slpersonnel.co.uk](http://www.slpersonnel.co.uk)



## Daniella Smith: Sherwin Hall Interiors

We provide a professional fitted kitchen design, supply and installation to property developers. Our experienced project management team will ensure that every aspect of the project will be delivered on time and on budget. We will always pre-agree objectives and, to make your money go further offer our expertise to maximise your budgets in ways that you might not otherwise have considered. [www.sherwinhall.com](http://www.sherwinhall.com)



## Danielle Garrity: Smallman & Son

Smallman & Son Ltd is a family run construction and manufacturing firm with a history dating back to the 1980s. As an award-winning refurbishment, building and shop-fitting contractor, we pride ourselves on our excellent customer service and our promise to complete every project within budget and to strict timescales. [www.smallmanandson.co.uk](http://www.smallmanandson.co.uk)



## Danny Gohil: Pencil and Coffee

As a digital solutions agency we have created a system where you can choose a monthly package to suit you. This makes it easy for you to manage your venture and focus on other important things whilst we handle the rest! [www.pencilandcoffee.com](http://www.pencilandcoffee.com)




## David Young: The Soldiers' Charity

We give a lifetime of support to soldiers and veterans from the British Army, and their immediate families, when they are in need. We make grants to individuals through their Regiments and Corps and support a wide range of specialist charities that sustain the British Army 'family', both at home and around the world. <https://soldierscharity.org>

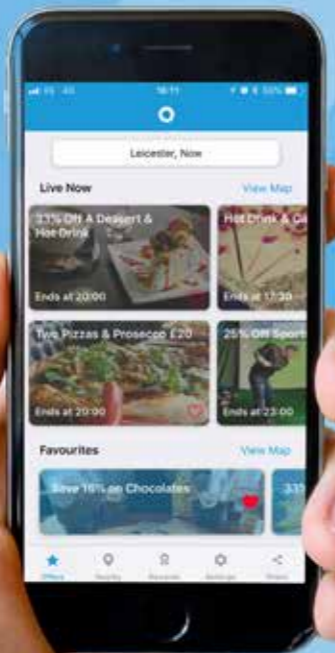


## Debbie Goodlip: Monat

MONAT starts with changing your hair and eventually changes your life. We offer a generous compensation plan, an exceptionally nurturing support system, and caring, committed leaders who treat you like family. <https://welovehair.mymonat.com>



**CONNECT WITH LIVE OFFERS AND THINGS TO DO IN LEICESTER!**



**food & drink  
spa & beauty  
health & fitness  
and many more!**

**DOWNLOAD NOW!**

Download on the **App Store**

GET IT ON **Google play**

Search for the 'Out There App'



Founded in 1849 as an independent family business, you can enjoy Everards beers in more than 175 pubs across the East Midlands. Copper, amber, golden and ruby ales with the limited edition collection brews are part of the heritage of Everards and Leicestershire itself, as a business firmly at the heart of the community for many more generations to come. [www.shop.everards.co.uk](http://www.shop.everards.co.uk)



After a successful career in the music industry where Ninder's record company - Nachural Records - registered no.5 in the UK charts, a no.7 in the US charts and a further 9 no.1's globally.

Ninder then diversified into event production, establishing 3 brands - the Nachural Entrepreneurship Awards in the East Midlands, the Signature Awards in Birmingham and London, the Nachural Summer Business Awards in Wolverhampton. The networking/awards nights have grown rapidly with three key unique elements - firstly a learning element where the audience

of entrepreneurs and SME's hear from a high profile business person, secondly there is an opportunity to mingle with upto 600 high profile entrepreneurs and finally a celebration of the best businesses in the region.

These unique black tie events attract influencers from all over the country and are treated to 4 course meals and unrivalled entertainment where the audience is diverse and often hard to reach. There are plans for nachural to diversify into other related markets.

Ninder spends a lot of time putting back into the community - he is Board member of the Black Country LEP, Board member of the West Midlands Growth Company, Board member of Wolverhampton University, Chair of Charity of Steps to work, Vice Chair of Sandwell College, NED at Accord Housing, Trustee at Victoria Academy and Trustee at West Bromwich Albion.



### Deepak Rajput: Nexus Property Developments

Nexus Property Developments feel very passionate about property and have a reputation for building high quality and desirable homes. Utilising our highly skilled professional team with a combined experience of over 40 years in the property business enables us to maximise returns to our investors. [www.nexuspropertydevelopments.co.uk](http://www.nexuspropertydevelopments.co.uk)



### Derek Garlick: Forever Living

Discover the power of Aloe Vera. From Plant. To Product. To You. Meet the people, tour the farms and see the processes that make Forever's Aloe the best in the world! Learn more about joining the Forever Business and tap into an opportunity that can provide you time and freedom to build your own life according to your dreams. <http://foreverliving.com>



### Dominic Gomersall: Lumbers Jewellers

Lumbers is incredibly proud to be part of Leicester's heritage. Established in 1881, we have been at the heart of Leicester's success for over 135 years. Our team offer unparalleled service and knowledge, to create a luxury experience that will make you feel welcome and relaxed. [www.lumbers.co.uk](http://www.lumbers.co.uk)



### Emma Lay: King Richard III Visitor Centre

Major renovations have completely transformed the 150-year-old building into the home of a state-of-the art visitor centre, whilst retaining the character and features of the former school. Using great storytelling and 21st century technology, the centre tells the fascinating and moving story of the king's life and death, and reveals one of the greatest archaeological detective stories ever told. <https://kriii.com>



### Finola Brady: FB Architectural

I can provide a variety of architectural services, individually tailored to each project's and each client's requirements, and at a highly competitive cost. My clients include private individuals, architects, property developers, contractors, property investors and landlords. I work both locally to the East Midlands and nationally. [www.fbarchitectural.co.uk](http://www.fbarchitectural.co.uk)



### Gary Earp: GEC Luxury Design & Build

GEC Luxury Design & Build will transform your home into a stunning showcase. Whether you're looking to create more space, a wet room or a cinema room, we specialise in high quality house extensions and luxury property renovation. So, what are you waiting for? [www.luxurydesignandbuild.co.uk](http://www.luxurydesignandbuild.co.uk)



### Gemma Orton: Mocha Marketing

Here at Mocha Marketing, we're designed to act as an extension of your team, either as your marketing and communications department or in it. No mysterious black art here... just good old fashioned team work, transparency and a joined-up approach. [www.mocha-marketing.co.uk](http://www.mocha-marketing.co.uk)



Ripple HR's Jane Galvez provides a pragmatic, straight forward approach to any human resources project.

This might be in assisting senior management in a streamlining exercise, introducing HR structure into

the business or implementing good practice to drive up levels of commitment and performance.

These are just some of the projects Jane takes on – but only after working hard to gain a clear understanding of client needs, developing a strong working relationship with the client, and gaining the trust of employees.

Every project carefully balances strategy with employee wellbeing. Whether Jane is advising and coaching senior management or heading a reorganisation project, she creates open channels of communication to ensure that everyone is up to date with progress, there is a positive enjoyable culture and engagement levels are high – always ensuring that the financial and organisational performance needs of the business are met.

<https://ripple-hr.co.uk>



Brentingby Gin is a true craft gin, combining contemporary with tradition to create a modern and unique Gin, distilled in Melton Mowbray, rural capital of food.

Brentingby hope to inspire their drinkers with the same passion for locally-made, authentic produce, that inspired us to create it.

Distiller, Bruce had designed and constructed a 10 plate copper column still, meticulously assembling each piece of the structure. Under world class master distiller Tom Nichol, Bruce gradually honed his expertise to confidently earn the label of craft gin maker with Brentingby being featured in Vogue Magazine.

[www.brentingbygin.co.uk](http://www.brentingbygin.co.uk)



### Graham Smith: Cunningtons

If you are looking for a team of reliable, approachable, and proactive accountants who will do more than just respond to your needs but work alongside you to help you succeed you have come to the right place. Business owners need the support of professionals who provide on-time, effective solutions to help their business move forward. We aim to provide such a service. [www.cunnington-130.co.uk](http://www.cunnington-130.co.uk)



### Jackie Parkes: A&J Promotions

Allan and Jackie formed A & J Promotions Ltd in July 2010, together we offer over 30 years experience in the Promotional Products Industry. Finding the most suitable Products for your marketing campaigns is our main objective. We pride ourselves on providing an unsurpassed service from conception to delivery. [www.aandjpromotionsltd.com](http://www.aandjpromotionsltd.com)



### Jade Brindley: Koa Consulting

Koa Consulting is designed to support businesses navigate the endless ocean of business growth options. We help our clients to establish a clear and simple business development strategy tailored to your needs. If you want to maximise your profits by raising your profile, gaining more customers and building on existing business relationships then Koa Consulting can help. <http://koaconsulting.co.uk>



### Jane Galvez: Ripple HR

Ripple HR provide pragmatic commercial HR solutions for SME's prioritizing company culture and employee engagement whilst delivering to strategic aims. 20+ years of experience in SME businesses. All solutions available with initial consultation FOC to review the needs of the business. <https://ripple-hr.co.uk>



### Janet Tomblin: Travel Counsellors

I am an independent travel professional providing busy people with the very best personalised, hassle-free advice on any travel arrangements, anywhere in the world. [www.travelcounsellors.co.uk/janet.tomblin](http://www.travelcounsellors.co.uk/janet.tomblin)



### Jaspal Bhamra: Asian Plaza Business Directory

We provide a high quality digital marketing and web design platform. We pride ourselves on marketing our clients effectively to target certain audiences, our innovative marketing techniques provide a different twist on modern day advertising for businesses. Our aim is to take your business to the next level and help break into the certain market audiences to gain the maximum exposure possible. [www.asianplaza.co.uk](http://www.asianplaza.co.uk)



### Jilly Mattley: Essentially Floral

Essentially Floral provide luxurious blooms in stunning locations, delivering flowers for beautifully elegant weddings, events, anniversaries and birthda celebrations. [www.essentiallyfloral.co.uk](http://www.essentiallyfloral.co.uk)

# KUKU | CREATIVE

MARKETING | DESIGN | PR | EVENTS

## YOUR BRANDING EXPERTS

Do you know whether your brand is working for you or against you? Your brand is the first thing people will notice when they consider buying your products or services.

At KuKu Creative we combine a creative marketing agency approach with the flexibility of a freelancer and branding is our business. We know how to successfully craft, launch and communicate your brand ideas in line with your industry. What's more, our hand-picked team of experts will always work to your project brief generating interesting ideas to keep your marketing messages fresh, exciting and relevant.

Our services include:

- Free Brand Health Check
- Graphic Design / Website Design
- Strategic Marketing Planning Sessions
- Marketing Support
- Social Media Management
- PR/Events Management

**It's time to go KuKu!**

-  [www.kukucreative.co.uk](http://www.kukucreative.co.uk)
-  [stephen@kukucreative.co.uk](mailto:stephen@kukucreative.co.uk)
-  01157 841502 / 07580 136693
-  [kuku\\_creative](https://www.instagram.com/kuku_creative)
-  [KuKu\\_Creative](https://www.facebook.com/KuKu_Creative)
-  [@Ku\\_Ku\\_Creative](https://twitter.com/Ku_Ku_Creative)



© Suzanne Fells Photography



### Joanna Burrows: Twenty Twenty

We're called TwentyTwenty for a reason. Our aim is to help young people see beyond their disadvantage and disengagement, recognise their worth and potential, focus on building the skills for success, and develop a clear vision and plan to achieve sustained employment and a bright future. [www.twentytwenty.org.uk](http://www.twentytwenty.org.uk)



### John Constantine: John Constantine Magician

High class magic entertainment for weddings, private parties and corporate events. Outstanding close up magic available from an award-winning professional magician for your event to help make it as memorable and successful as possible. John performs throughout the UK particularly Leicestershire, Northamptonshire, Nottinghamshire, Birmingham and London. <http://johnconstantine.co.uk>



### John Cooper: It'seeze Websites

Producing exceptional websites for local businesses throughout Leicestershire and the surrounding areas, we offer a range of expert services to help you get the most out of your online presence. Our talented web designers will work closely with you, taking the time to understand what it is you need in order to create a website that exactly reflects your unique company. [www.itseeze-leicester.co.uk](http://www.itseeze-leicester.co.uk)



### Jude Read: Jude Read HR

Jude Read-HR Consultancy provides strategic outsourced HR solutions and HR case management to small and medium businesses within a 50 mile radius of Leicestershire. As a commercially-focused HR consultancy, we offer practical, no nonsense HR advice to suit the needs of your business. [www.juderead-hrconsultancy.co.uk](http://www.juderead-hrconsultancy.co.uk)



### Julia Moore: Tiles by Textiles

Operating from a studio in Leicestershire, I am able to offer a bespoke service. If clients want one of my designs in another colour, this is possible and they can also have their own designs printed onto tiles. In addition I helps clients visualise tiles in situ by inserting images into the client's photograph of the area to be tiled. [www.tilesbytextiles.com](http://www.tilesbytextiles.com)



### Karen Leishman: Charnwood Accountants

We are one of the region's leading independent firms of Chartered Accountants and Business Advisors. Our unique approach to Accountancy and Taxation means that our clients benefit from truly exceptional advice. [www.chnwoodaccountants.co.uk](http://www.chnwoodaccountants.co.uk)



### Katie Gordon: The Farmhouse at Mackworth

Our ethos here is simple. We're all about being excellent in everything we do; from the food and drinks we serve to the home-from-home space we've created. So whether you're joining us for a drink at the bar, an overnight stay or a special event we aim to go above and beyond every time you visit. <https://thefarmhouseatmackworth.com>



Rebecca is a creatively talented milliner based in the market town of Oakham, Rutland. Specializing in creating couture headpieces for any occasion, using the finest quality materials to produce her unique bespoke headpieces.

Rebecca found a love for hats when friends and family started asking her to design and make headpieces for weddings and special events. Enjoying using different materials and experimenting with designs, she found that people began to show interest and from there decided to start showing her work through various social media channels, all with phenomenal success.

Rebecca Couture launched her first collection in August 2015 and she has continued to be overwhelmed with the response, growing from strength to strength. As well as creating yearly Spring/Summer and Autumn/Winter collections, Rebecca also designs and makes bespoke pieces.

As well as being available at [www.rebeccacouturemillinery.co.uk](http://www.rebeccacouturemillinery.co.uk) and in her Oakham studio, you can also find a selection of Rebecca's hats stocked in various boutiques across the UK and overseas.

Whether it be a wedding, a day at the races or anything in between, you can be sure to find something to suit the occasion at Rebecca Couture Millinery.

[www.rebeccacouturemillinery.co.uk](http://www.rebeccacouturemillinery.co.uk)  
[info@rebeccacouturemillinery.co.uk](mailto:info@rebeccacouturemillinery.co.uk)  
01572 490432



### *Katie Neeves:* Martin Neeves Photography

My many years as photojournalist serve me well when I am photographing weddings or corporate events, as my reactions are extremely fast. This is vital for true reportage photography. Also, I am a "people" person. I will be warm and friendly towards your guests and I think you will find me a good person to have around.  
[www.martinneeves.com](http://www.martinneeves.com)



### *Ken Brown:* Direct Route Collections

If you want your debts recovered swiftly you need experience and efficiency. Established 24 years ago, our team has hundreds of years combined experience and true expertise in business-to-business debt collection and credit management. We successfully act for thousands of businesses throughout the UK, ranging from sole traders to some of the most well-known PLCs. [www.directroute.co.uk](http://www.directroute.co.uk)



### *Kevin Fraser-Urquhart:* Dlux Magazine

One Magazine. Two Versions: dluxe LEICESTERSHIRE and dluxe BIRMINGHAM & SOLIHULL. Unashamedly top end, this glossy, lifestyle magazine is aimed at the highest earning, super-influential residents of our two regions. <http://dluxe-magazine.co.uk>



### *Laura Partridge:* Leicester Tigers

Leicester Tigers is an English professional rugby union club based in Leicester, England. They play in Premiership Rugby, England's top division of rugby. [www.leicestertigers.com](http://www.leicestertigers.com)



### *Leslie Singleton:* LWS Training Services

As a Manager or Business Owner, you'll be well aware of the risks involved with running your company, whether you have 5 employees or 100. We are a provider of First Aid CPR certification classes and Health & Safety courses across the Midlands. [www.lwstrainingservices.co.uk](http://www.lwstrainingservices.co.uk)



### *Louisa Sando-Patel:* Bright Owl Copywriting

Are you struggling to find the right sales message for your marketing? Do you feel lost for words when it comes to your business writing? Or do you need a promotion but you're not sure where to start? Sometimes you just can't find the right words. And this is when you need a copywriter. <https://brightowlcopywriting.com>



### *Lucy West:* BC Lifestyle Events

We at BCL HQ feel that collaborations create profit, together everyone achieves more so lets make it happen! [www.facebook.com/BCLifestyleEvents](http://www.facebook.com/BCLifestyleEvents)

# Suzanne Suthers

As a Personal Stylist I love helping people to realise their own unique style, enabling them to not only look amazing but remain authentic.

I'll guide clients through a journey of discovering the colours that suit them best and make them most visible, along with finding the styles to suit their own body shape and personality. Throughout the process we'll keep in mind the client's own personal brand, ensuring this remains consistent as we develop a new wardrobe both for business and socially.

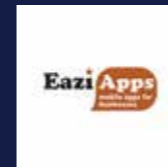
In a world of social media where visibility is vital, looking fabulous, interesting and genuine will give a head start above the competition. I also work alongside photographers to aid clients to prepare for business photo shoots.

After a consultation clients tell me they are much more relaxed and confident in business when they understand how to look polished and appropriate.

My services include Colour Analysis, Style Sessions, Personal shopping, Wardrobe Reviews and Make-up Lessons.

Just get in touch if you'd like to know more or would like discuss your wardrobe needs.

**Suzanne Suthers**  
[www.suzannesuthers.com](http://www.suzannesuthers.com)  
[hello@suzannesuthers.com](mailto:hello@suzannesuthers.com)  
Tel: 07814 840861



## *Maresh Patel: Eazi Apps*

The new mobile standard is here. Combining the latest in smartphone and web technology, we can build an app for your business that is highly discoverable. We drive more users to your app resulting in increased customer engagement, sales and repeat business. <https://eazi-apps.com/cleke>



## *Maria Hanson MBE: Me & Dee Charity*

A Derby based charity providing respite holidays to adults and children who have a life changing, life shortening or terminal condition. We also provide holiday breaks to serving and ex-serving military personnel who have suffered either psychological or physical injuries whilst serving their country. [www.meanddee.co.uk](http://www.meanddee.co.uk)



## *Mark Eydman: Six Pillars Consulting*

Established to help organisations deliver outstanding Customer Experiences on a consistent basis such that Loyalty is enhanced and used to drive business growth. Our operating philosophy is that "sustainable, profitable growth is best supported by strategic and tactical decision making which seeks to balance Customer Loyalty, Operational Effectiveness and Employee Engagement". [www.sixpillarsconsulting.com](http://www.sixpillarsconsulting.com)



## *Martin Scholes: Scholes Financial*

Our aim is to support our clients in planning the way forward with as much control, choice and certainty as possible, and then make it happen when the time is right! [www.scholesfinancial.co.uk](http://www.scholesfinancial.co.uk)



## *Matt Yondale: Arch Communications*

Arch Communications is a high-quality public relations and marketing agency based in Nottinghamshire, but operating across the East Midlands and nationally. We work to get you noticed and sell what you have to offer. In a nutshell – we help you work out what your story is, and then tell it. [www.arch-comms.co.uk](http://www.arch-comms.co.uk)



## *Mike Collins: ICON Business Solutions*

Icon Business Solutions was founded in 1998, and after sixteen years the unique consulting systems developed have helped over 7,000 global SME's achieve their goals. The mission of ICON is to use our proven consulting systems to help business owners achieve their goals with confidence. [www.iconbusinesssolutions.com](http://www.iconbusinesssolutions.com)



## *Naren Naik: Bankfield Financial Advisers*

Whatever you have managed to accumulate thus far, it is your money that you have toiled for, and we have great respect for that. As entrepreneurs and business owners ourselves, we at Bankfield have experienced first-hand the sacrifices required to build capital. <http://bankfield.net>

Asian Plaza provide high quality digital marketing and web design platform. We pride ourselves on marketing our clients effectively to target certain audiences, our innovative marketing techniques provide a different twist on modern day advertising for businesses. Our aim is to take your business to the next level and help break into the certain market audiences to gain the maximum exposure possible.

Since being established Asian Plaza has developed into an industry leader adding services such as web design and podcasts to the list of services we offer. When wanting to advertise your business in the most effective and efficient way contact Asian Plaza.

[www.asianplaza.co.uk](http://www.asianplaza.co.uk)  
[info@asianplaza.co.uk](mailto:info@asianplaza.co.uk)  
07960998817



# WEB DESIGN & DEVELOPMENT

INFO@ASIANPLAZA.CO.UK



## Nick Biden: R&D Tax Expert

Does your organisation develop technical products, processes or services for its own use or in order to sell these products or services? Whilst delivering a project have you gained knowledge such that if you were to do the same project again you would do it differently? [www.rd-tax-expert.co.uk](http://www.rd-tax-expert.co.uk)



## Ninder Johal: Nachural Awards

Nachural is the leading proponent of Business to Business Events, Media Production and a successful Chart Topping Record Company. We specialise in presenting spectacular Red Carpet Black Tie Events, stunning Business Award Nights and memorable Corporate Presentations. [www.nachural.co.uk](http://www.nachural.co.uk)



## Oberon Gallery

At Oberon Gallery we are passionate about fine art that is both collectable and affordable. Our Art Gallery is backed by over 30 years experience in original paintings and limited edition prints. We offer a unique experience and personal service in a relaxed and friendly environment. [www.oberongallery.com](http://www.oberongallery.com)



## Olivia Pitt: Twenty Twenty

We're called TwentyTwenty for a reason. Our aim is to help young people see beyond their disadvantage and disengagement, recognise their worth and potential, focus on building the skills for success, and develop a clear vision and plan to achieve sustained employment and a bright future. [www.twentytwenty.org.uk](http://www.twentytwenty.org.uk)



## Pam Edwards: Phoenix Rising

Dedicated to helping you find your way out of the maze of confusion and make massive changes by giving you the tools you need to find the answers. To re-build or create the confidence you need so that you can explore the possibilities, embrace change and be supported while YOU create. [www.pppresentations.co.uk](http://www.pppresentations.co.uk)



## Pam Marr: Positive Press Business Consulting

I provide content of a creative, strategic or technical nature which is grammatically correct, concise and – most importantly – interesting! Regardless of whether it is a website you wish to populate, an operations manual you need to construct, a brochure you have to produce or simply a tight editorial deadline you've run out of time for, I can help on a retained basis or simply ad-hoc on a project by project basis. [www.positive-press.co.uk](http://www.positive-press.co.uk)



## Phil Izzard: Midlands Business Insurance Services

As every business is different, we do not provide off-the-shelf policies. Our aim is to fully protect your business in a way that aligns with where you are now and where you want to be in the future. This involves getting to know you and your company to ensure your business is protected against every eventuality. We will also help you to create a sound succession strategy to safeguard your business for the long term. <https://mbins.co.uk>

# STOKE ROCHFORD HALL

Stoke Rochford Hall is a unique hall with golf and leisure club, as well as a conference and banqueting centre of the highest reputation.

A striking victorian countryside mansion with grand elegant rooms and spacious guest accommodation, so ideal for a celebration event, business trip, or conference.

The hall is set within idyllic formal gardens amidst beautiful Lincolnshire countryside, so perfect for a weekend getaway. Stoke Rochford Hall is part of the award winning independent Talash Hotels Group, but whatever your reason for visiting, you'll be sure to receive a warm welcome.

[www.stokerochfordhall.co.uk](http://www.stokerochfordhall.co.uk)

*Talash*  
HOTELS GROUP



## Pritesh Patel: Out There Leicestershire

As every business is different, we do not provide off-the-shelf policies. Our aim is to fully protect your business in a way that aligns with where you are now and where you want to be in the future. This involves getting to know you and your company to ensure your business is protected against every eventuality. We will also help you to create a sound succession strategy to safeguard your business for the long term. <https://www.outthere.today>



## Rob Hattersley: The Farmhouse at Mackworth

Our ethos here is simple. We're all about being excellent in everything we do; from the food and drinks we serve to the home-from-home space we've created. So whether you're joining us for a drink at the bar, an overnight stay or a special event we aim to go above and beyond every time you visit. <https://thefarmhouseatmackworth.com>



## Robert Brown: WPA Healthcare

My focus is to help new customers buy medical insurance; particularly the self-employed, company directors and professionals. I also specialise in dealing with company policies for 2 employees and above. You can rest assured that I will help you to choose the right cover at the right price. [www.wpa.org.uk](http://www.wpa.org.uk)



## Rubina Lokat: Print Print

We want our clients to gain recognition for the products that they sell and the service that they provide, through our effective print solutions. We don't waste their budget or their time. We work collaboratively with our clients so that our print fulfils their vision and ultimately delivers a return to their bottomline. From concept to design, design to print and print to installation. <http://printprint.co.uk>



## Sandra Pollock: Open Mind Training and Development

Training can change your performance, improve the quality of the service you provide, help you to learn more about your job and help you climb the ladder of success. Coaching is unlocking your potential to maximize your performance and is a learning process rather than being taught. You already have what you need, coaching will help you to get it out. [www.open-mind-training-development.co.uk](http://www.open-mind-training-development.co.uk)



## Sanjay Bhawsar: Integral Business Group

Integral Business Group are based in Stoneygate, Leicester, specialising in procuring commercial energy for SME and corporate companies. Backed by more than 15 years of experience, we aim to offer clients with an impartial review of their business gas and electricity requirements to ensure they are getting the best prices on the market. [www.ibguk.com](http://www.ibguk.com)



## Sanjaya Pandit: In-U

My aim is to simply evoke transformation! My vision is to position and establish the importance of emotional wellbeing in everything we are and do every day. At InU that journey starts from the beginning. There is no time like the present so ceasing this moment evokes change. <http://in-u.co.uk>



## CREATING BEAUTIFUL SPACES FOR FINE LIVING

Multi-award winning luxury house extensions & property renovations - transform your home into a stunning showcase.

"The project was completed within the time frame specified. The communication during the building works was consistent and gave us peace of mind throughout, as we were unable to visit the site regularly. The quality of finish was first class and I would thoroughly recommend GEC to anyone considering taking on a building project."

**Oscar, East Midlands**

[www.luxurydesignandbuild.co.uk](http://www.luxurydesignandbuild.co.uk)  
[enquiries@luxurydesignandbuild.co.uk](mailto:enquiries@luxurydesignandbuild.co.uk)  
01455 616390 / 07545 571748

LUXURY DESIGN & BUILD



designeering

### Sébastien de La Hamayde: Designeering

Designeering is a full service creative agency. We specialise in Branding, Marketing, Print, Packaging and Website Development. A unique blend of French flair and British design expertise since 1994. Over two decades later, there's the same desire to discover, imagine, create, innovate and inspire. Clients choose us for our lateral thinking, creative execution and we're approachable. [www.designeering.com](http://www.designeering.com)

Warning  
ZONE  
LIFE SKILLS CENTRE

### Simon Wright: Warning Zone

Warning Zone is a Life-Skills Centre and children safeguarding charity. We deliver life-saving messages to children and young people across Leicester, Leicestershire and Rutland. Historically, we have worked with Year 6 children (aged 10/11), catching them at a key transition in their life as they venture in to secondary school. [www.warningzone.org.uk](http://www.warningzone.org.uk)

WDA Healthcare Practice

### Sonia Mohla: Stoughton Grange Smile & Aesthetics

We provide clinic covering the following treatment & services: Private GP service / Aesthetics & Botox inc. Vampire Facelift / PRP & Hair Loss / Hypnotherapy / Psychotherapy / Mental Health / Chiropractic Service / Cambridge Weight Plan / Counselling for all aspects / Massage Therapies...to name a few! [www.stoughtongracesmile.co.uk](http://www.stoughtongracesmile.co.uk)

BELVOIR

### Stacey Ferguson: Representing the Duchess of Rutland at Belvoir Castle

Belvoir Castle is the ancestral home of the Dukes of Rutland. The family have lived at Belvoir in an unbroken line for almost a thousand years. Crowning a hill in Leicestershire, its turrets and towers rise over the Vale of Belvoir like an illustration in a romantic fairytale. [www.belvoircastle.com](http://www.belvoircastle.com)

equillesse

### Stephanie Smith: Equillesse Pilates

We change the way you look, feel and move – forever! Individual & small group Pilates tuition in beautiful rural surroundings. Matwork classes & Pilates Apparatus sessions to suit all levels of fitness. <https://eqpilates.co.uk>

KUKU|CREATIVE

### Stephen Goddard: KuKu Creative

We are a professional brand design & marketing agency. By working with us you will create interest in your business, reach your customers and generate greater profit. Are you unhappy with the way your brand looks? Book your free brand health check with us today. [www.kukucreative.co.uk](http://www.kukucreative.co.uk)

Reservoir Finance  
#YourMoneyYourWay

### Stuart Milton: Reservoir Finance

Running a business can be challenging. That's why it is useful to have access to an experienced finance professional you can count on for guidance and help. Whether you're taking advantage of a new business opportunity or simply planning to cover day to day expenses, we can help you put together a tailored finance package with an amount and term that suits your business. [www.reservoirfinance.co.uk](http://www.reservoirfinance.co.uk)

## A very big thank you from us

We have many businesses and individuals we would like to thank personally, but want to thank all the sponsors and supporters of our Annual Birthday Reception at Belvoir Castle.

Particularly to Their Graces the Duke and Duchess of Rutland for being so generous in opening their home in order to celebrate business in the East Midlands, to our highly recommended printer Print Print in Leicester who have printed these fab Almanacs, Suzanne Fells Photography for our KuKu portraits, GEC Luxury Design & Build, Jude Read HR, Ralph & Helen Skripek & The Butler's Pantry Derby, Bev Sankey Arbonne, Ripple HR, Treehouse Cakes, Cocoa-Amore, 200 Degrees Coffee, Another? Wine Bar, The Farmhouse at Mackworth, Brentingby Gin, Everards, Essentially Floral, Rebecca Couture Millinery, Crow & Jester, Dominic



Gomersall of Lumbers Jewellers, Lexus Leicester, Stoke Rochford Hall, Talash Hotels Group, FU Media, InMagazine, Dlux Magazine, Saul Morgan & Trent House Studios, Out There Leicester, KuKu Creative, 7colours Photobooths, Pera Business Park, Passion Marketing & Lindsey Newman-Wood, Chutney Ivy, Bruxelles, David Fowkes Jewellery, NBV, NWES, Jennifer, Lady Gretton, DCVO, JP, Professor Surinder Sharma, DL, Wasim Khan, MBE, Diana Thompson, Peter Gardner, Jen Wilks, Adrian Ganderton, Steve Rouse, Ninder Johal, Philip & Steve Megson, Wendy Hain, Jaspal Bhamra, Shaf Islam, Ercan Dogan, Bruce Midgley, Stacey Ferguson, Emma Sirett, Grace



Milham, Natalie Barton, Steve Allsopp, Daniel Wheatley, Danielle Garrity, Joanna Burrows, our very kind charity prize donors and our Partners; Nachural Events, The Asian Plaza Business Directory and Love Business Expo, Her Majesty's Lord-Lieutenants in Leicestershire, Derbyshire, Rutland and Nottinghamshire, members of the Lieutenancy, Shrievally and numerous Civic Leaders who have all given their time to support businesses in their respective Counties.

We have finally to thank two special groups of people, firstly, the KuKu Team for their dedicated support behind the scenes at all our Connect Receptions, particularly to hosts with the most, Kathie and Graham for their warm and friendly welcome at our receptions and of course to our Members who play a vital and important role in the economy of the region and wider Midlands and those businesses that we celebrate and showcase within this Almanac.

Our warmest wishes and personal thanks,  
Stephen & Philip



### Sue Grogan: Joined-Up Working

Businesses survive and thrive because of the people they employ. First of all, your staff are your most important asset. Without them you'd have no clients and no business. Looking after your staff is your highest priority as well as your clients. Furthermore, if staff with stress go off sick, that affects your business productivity. <https://joinedupwork.co.uk>



### Suzanne Fells: Suzanne Fells Photography

A key aspect that is often overlooked is that you are your brand and visual identity. So many judgements, opinions and decisions are made about you in split seconds by just looking at a photograph. The image that you use to present yourself is the primary interface for the very first instance when your potential client first discovers you. [www.suzannefellsphotography.co.uk](http://www.suzannefellsphotography.co.uk)



### Suzanne Suthers: Personal Stylist and Colour Consultant

As a Personal Stylist and Colour Consultant let me help find the right colours and styles that will make you feel fabulous and when we look better we feel much more confident. Often we want to improve our image but don't know where to start or what our own style should be. I can help you discover just how stylish you can become enabling you to be the very best version of yourself. [www.suzannesuthers.com](http://www.suzannesuthers.com)



### Tom Mayne: Mattioli Woods

We provide our clients with an all-embracing and integrated approach that is designed to develop a clear strategy for financial plans, supported by sound investment and taxation initiatives. Our clients want to be confident in the advice we give and for strategies to be administered quickly and efficiently. [www.mattioliwoods.com](http://www.mattioliwoods.com)



### Tori Richards: The Partnership Lifestyle Club

With socialising at the fore front of our mind, rather than providing a traditional 'bricks & mortar' members club, the distinct difference is that we provide our members with a range of magical & memorable experiences spread geographically across the UK. [www.thepartnershiplifestyleclub.com](http://www.thepartnershiplifestyleclub.com)



### Tracy Allen: Not Just Travel

You know what your dream holiday looks like. But it's hard to get excited with all the research and planning it takes to make it a reality – let alone be sure you're getting the widest choice and the best offers. There's a better way – let me take care of it all for you. [www.notjusttravel.com/tracy-allen](http://www.notjusttravel.com/tracy-allen)



### Viks Patel: Out There Leicestershire

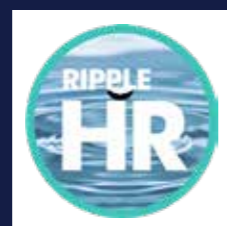
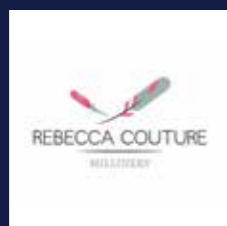
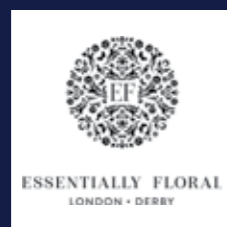
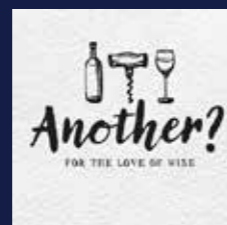
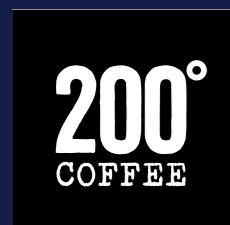
As every business is different, we do not provide off-the-shelf policies. Our aim is to fully protect your business in a way that aligns with where you are now and where you want to be in the future. This involves getting to know you and your company to ensure your business is protected against every eventuality. We will also help you to create a sound succession strategy to safeguard your business for the long term. <https://www.outthere.today>



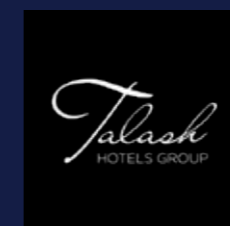
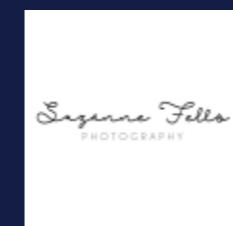
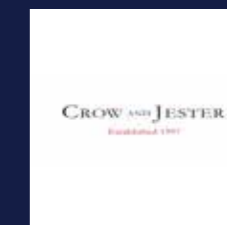
### Yvonne Higgins: Empire Corporate Finance

At Empire Corporate Finance you can be sure of a helpful, professional and friendly service from any of our team. We are highly skilled and experienced professionals which means we get to know you and you will always speak to someone who knows about your case. [www.empirecorporatefinance.co.uk](http://www.empirecorporatefinance.co.uk)

## Annual birthday reception



## sponsors and supporters



---

# BE OUR GUEST

---

If you are yet to still visit us then we would love to offer you a complimentary place at one of our forthcoming Connect Receptions. We currently hold monthly Connect Receptions in different exciting, luxurious or interesting venues across Derbyshire and Leicestershire and additionally KuKu Connect "Boutique" at Pera Business Park which showcases the best of Melton & Rutland.

To find out more and reserve your free guest place please contact us at [hello@kukuconnect.co.uk](mailto:hello@kukuconnect.co.uk)